



Hard Chess Puzzle # 0097

By

G Bud Games
<https://gbud.in>

January 6, 2022

Contents

Hard Chess puzzle # 0097 - Mate in 4 moves	4
Hard chess puzzle 0097	4
Solution to hard chess puzzle 0097	5
Solution 1	5
Right moves for the solution to the hard chess puzzle 0097	9
Explanation for the moves	9
Categories of hard chess puzzle 0097	10
hard chess puzzle 0097 chart	11
How to view the solution to hard chess puzzle 0097	13
How to get help for moves in the hard chess puzzle 0097	14
Play chess for free	15

List of Figures

1	Solve this hard chess puzzle 0097. Mate in 4 moves @ https://gbud.in/g4tb9r3	4
2	Solve this hard chess puzzle online with solution @ https://gbud.in/g4tb9r3	4
3	Initial board position of hard chess puzzle 0097	5
4	Rh8+	6
5	Kxh8	6
6	Re8+	7
7	Rg8	7
8	Bc3+	8
9	f6	8
10	Bxf6#	9
11	hard chess puzzle 97 chart 1	11
12	hard chess puzzle 97 chart 2	12
13	hard chess puzzle 97 chart 3	12
14	hard chess puzzle 97 chart 4	13
15	Click the solution button to view solutions @ https://gbud.in/g4tb9r3	13
16	Click the help button to get help on next move @ https://gbud.in/g4tb9r3	14
17	Solve more hard puzzles @ https://gbud.in/chshdpz	14
18	Solve other puzzles @ https://gbud.in/chsgppz	14
19	Play chess online for free. Solve puzzles and play with friends	15

20	Solve this puzzle online by scanning this QR code or go to the link below	16
----	--	----

Hard Chess puzzle # 0097 - Mate in 4 moves

Solve this hard chess puzzle and improve your chess games through improvement of your chess strategies and chess tactics. This hard puzzle is a subset of [kids games](#).

Puzzle No : 0097

Difficulty level : hard

Description : Mate in 4 moves

Next Move : White

Player level : Advanced

Short URL for puzzle : <https://gbud.in/g4tb9r3>

Hard chess puzzle 0097

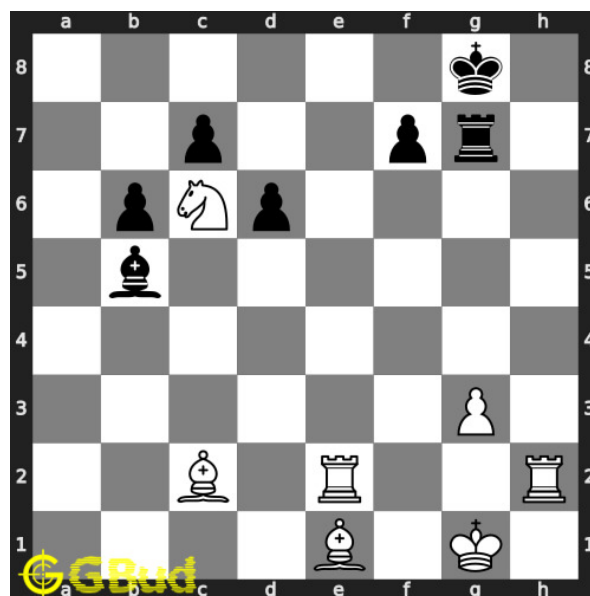


Figure 1: Solve this hard chess puzzle 0097. Mate in 4 moves @ <https://gbud.in/g4tb9r3>



Figure 2: Solve this hard chess puzzle online with solution @ <https://gbud.in/g4tb9r3>

Dont forget to check out [chess puzzles](#), [easy chess puzzles](#), [medium chess puzzles](#), [hard chess puzzles](#) and [chess puzzles collections](#) .

Solution to hard chess puzzle 0097

At this puzzle, next [move](#) is by [White](#). The objective of the puzzle is to mate in 4 moves.

See the interactive solution at the [puzzle page](#)

Solution 1

Initial board position This is the initial board position of hard chess puzzle 0097.

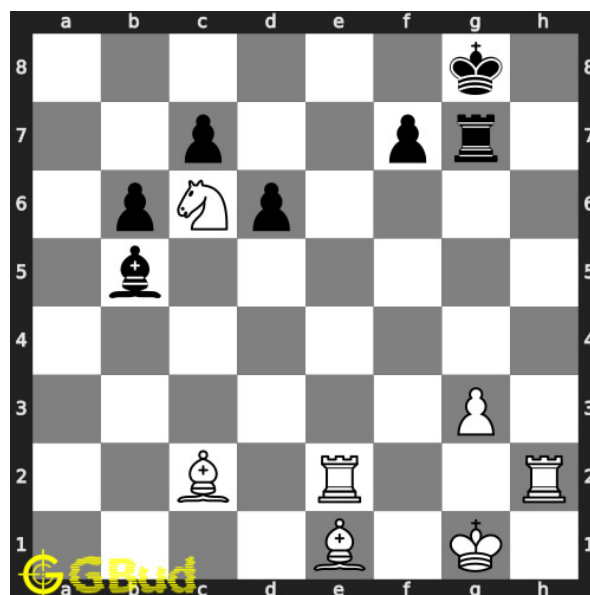


Figure 3: Initial board position of hard chess puzzle 0097

Move 1 Move by white

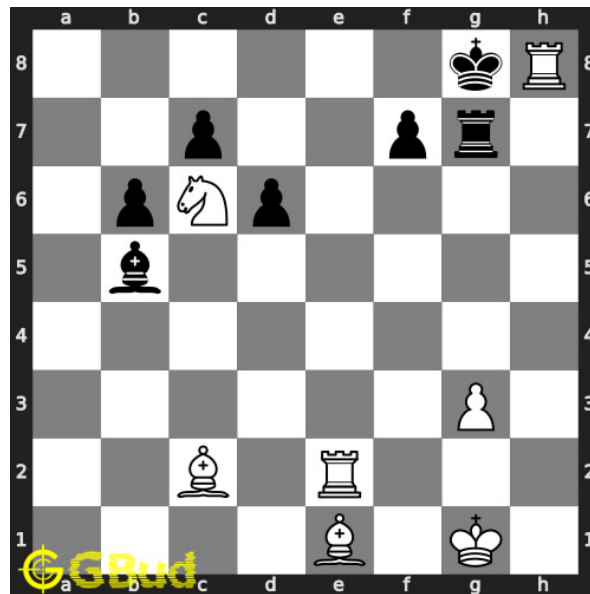


Figure 4: Rh8+

your **rook sacrifices** itself to attract the opponent's **king** to h8

Move 2 Move by black

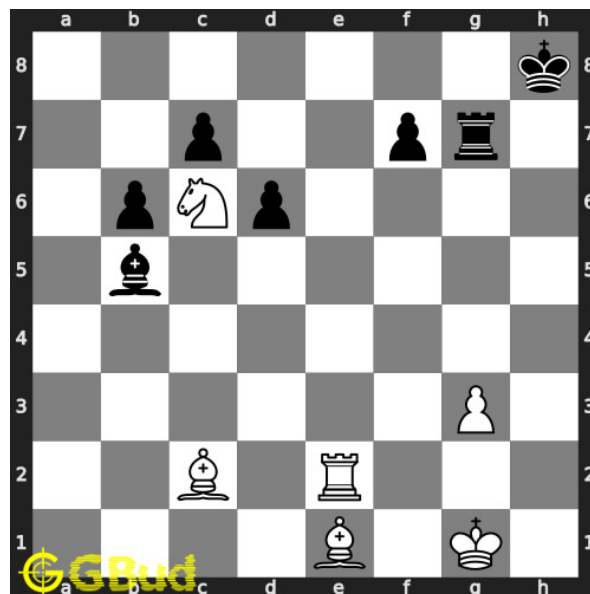


Figure 5: Kxh8

opponent's **king captures** your **rook** as it is forced. this is a zugzwang **move**.

Move 3 Move by white

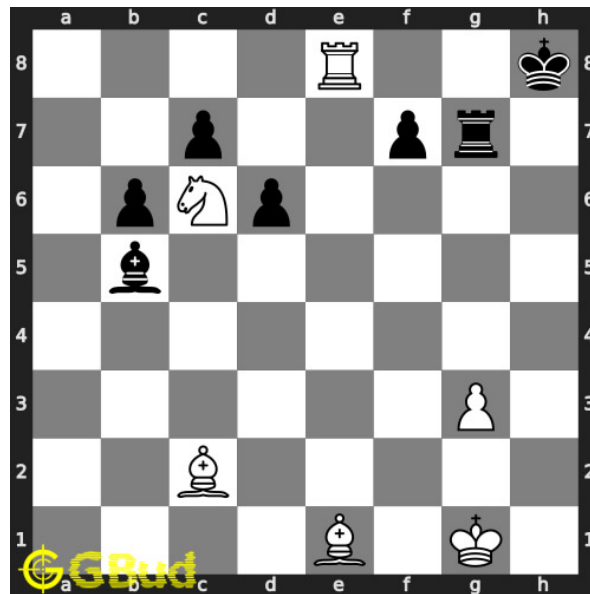


Figure 6: Re8+

your next **rook** gives the **check**

Move 4 Move by black

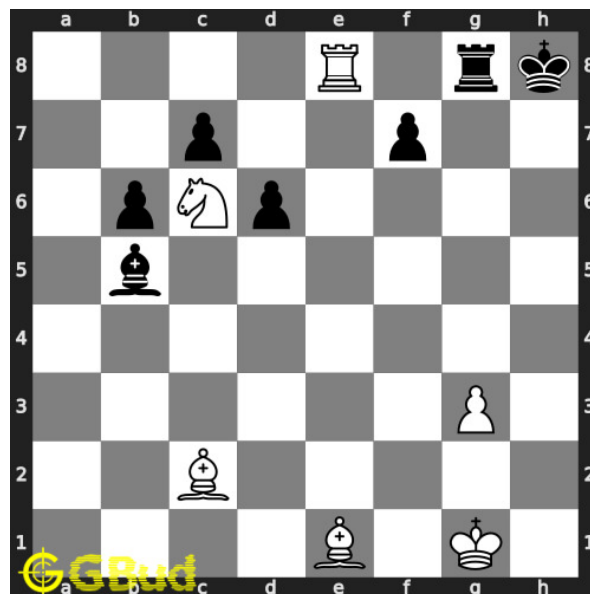


Figure 7: Rg8

opponent's **rook** blocks the **check**. now the **rook** is **pinned** to their **king**

Move 5 Move by white

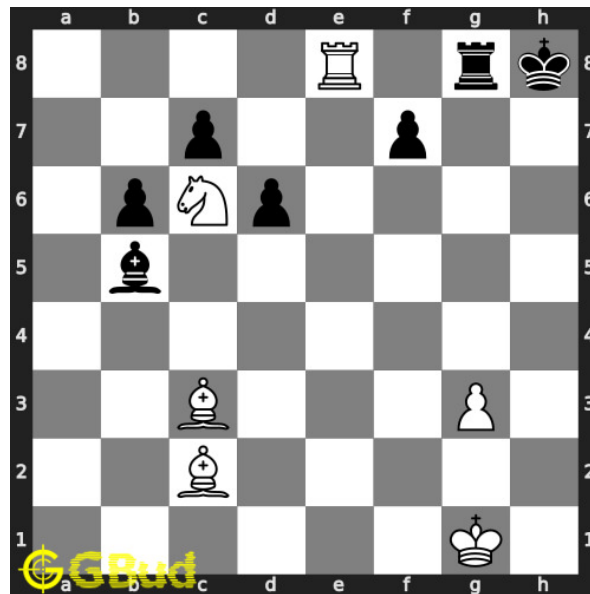


Figure 8: Bc3+

your **bishop moves** to c3 and gives **check** to opponent.

Move 6 Move by black

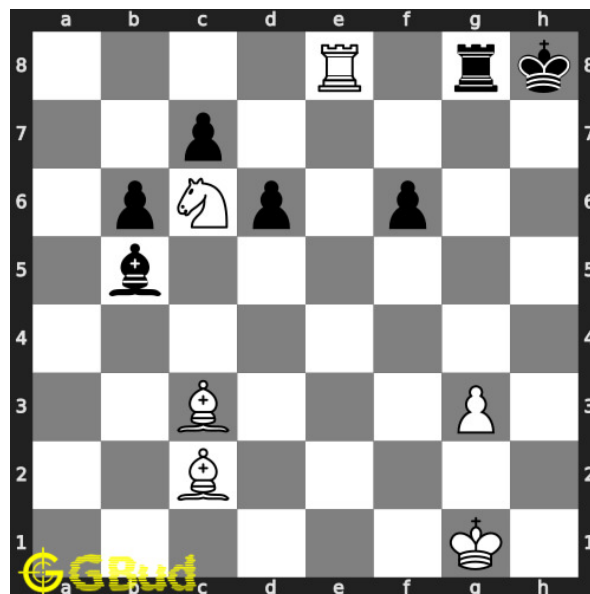


Figure 9: f6

opponent's **pawn moves** and blocks the **check**

Move 7 Move by white

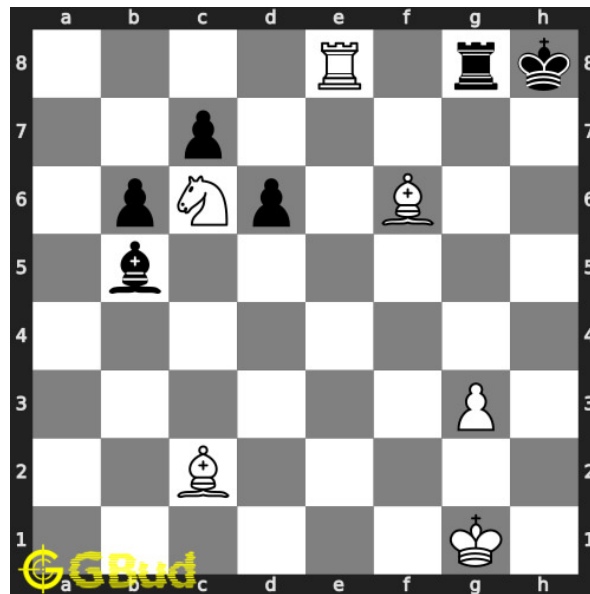


Figure 10: Bxf6#

your **bishop** captures the **pawn** and **checkmate**. opponent's **king** can't **move** as h7 is attacked by your **bishop**.. this is how you can **mate** in 4 **moves**.

Right moves for the solution to the hard chess puzzle 0097

Based on the objective of the puzzle, you have to make the right moves. Following are the right moves

1. Rh8+, Re8+, Bc3+, Bxf6#

Explanation for the moves

1. Rh8+ - Your rook sacrifices itself to attract the opponent's king to h8
2. Kxh8 - Opponent's king captures your rook as it is forced. This is a zugzwang move.
3. Re8+ - your next rook gives the check
4. Rg8 - Opponent's rook blocks the check. Now the rook is pinned to their king
5. Bc3+ - Your bishop moves to c3 and gives check to opponent.
6. f6 - Opponent's pawn moves and blocks the check
7. Bxf6# - Your bishop captures the pawn and checkmate. opponent's king can't move as h7 is attacked by your bishop.. This is how you can mate in 4 moves.

8. For right move - You have understood the power of bishop and sacrifice. Keep learning
9. For wrong move - You could have had a checkmate by sacrificing of a rook. Try again

Categories of hard chess puzzle 0097

This hard chess puzzle falls in these categories.

1. [Hard chess puzzles](#)
2. [Sacrifice puzzles in chess](#)
3. [Endgame puzzles in chess](#)
4. [Strategy puzzles in chess](#)
5. [Mate pattern puzzles in chess](#)
6. [Zugzwang puzzles in chess](#)
7. [Mate in 4 puzzles in chess](#)
8. [Pin puzzles in chess](#)
9. [Rook puzzles in chess](#)
10. [Bishop puzzles in chess](#)

hard chess puzzle 0097 chart



Figure 11: hard chess puzzle 97 chart 1



Figure 12: hard chess puzzle 97 chart 2



Figure 13: hard chess puzzle 97 chart 3

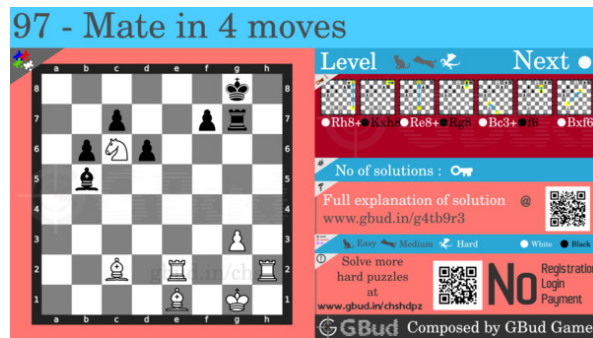


Figure 14: hard chess puzzle 97 chart 4

How to view the solution to hard chess puzzle 0097

To view the [solution to this puzzle](https://gbud.in/g4tb9r3), follow the steps given below

1. Go to the [puzzle page](https://gbud.in/g4tb9r3)
2. Click the solution button (Key as shown [below](https://gbud.in/g4tb9r3)) to view the solution



Figure 15: Click the solution button to view solutions @ <https://gbud.in/g4tb9r3>

How to get help for moves in the hard chess puzzle 0097

To get help or the possible next moves in the puzzle, , follow the steps given below

1. Go to the [puzzle page](#)
2. Click the help button (exclamation mark as shown [below](#)) to get help or suggestion on next possible [move](#)



Figure 16: Click the help button to get help on next move @ <https://gbud.in/g4tb9r3>



Figure 17: Solve more hard puzzles @ <https://gbud.in/chshdpz>



Figure 18: Solve other puzzles @ <https://gbud.in/chsgppz>

Play chess for free

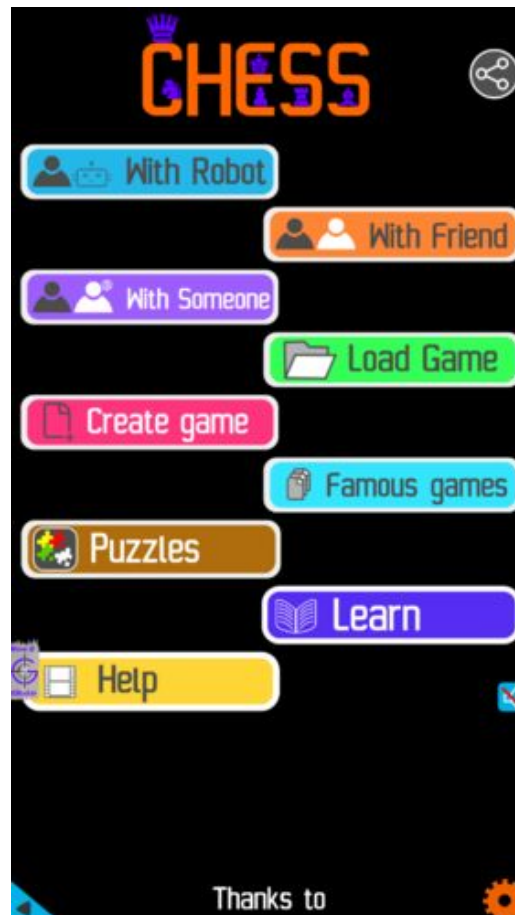


Figure 19: Play chess online for free. Solve puzzles and play with friends

Play chess for free at <https://gbud.in/chs>

We present you a platform to play chess online with friends for free. No need to install any app. You can play chess for free without registration or login.

Simple. You can do several chess related activities.

1. [solve chess puzzles](#)
2. [learn about chess](#)
3. [play chess with computer](#)
4. [play chess with friend](#)
5. [create your own chess games](#)

6. [fen viewer](#)
7. [fen editor](#)
8. [fen generator](#)
9. [pgn viewer](#)
10. [chess board editor](#)
11. [view famous chess games.](#)



Figure 20: Solve this puzzle online by scanning this QR code or go to the link below

<https://gbud.in/g4tb9r3>

Read the latest article on Hard Chess puzzle # 0097 - Mate in 4 moves by scanning this QR code or click the link

Previous article : « [Hard Chess puzzle # 0096 - Mate in 3 moves](#)

Next article : [Hard chess puzzles](#) »

[Back to top](#)

[Contact Us](#)